


RELIGIOUS MODERATION POLICY IN EARLY CHILDHOOD EDUCATION INSTITUTIONS

**By : Adinda Nida Nur'zahra, Sufi Shohibul
Wafa, Lista Sugiyana, Teris Maftuhatusun,
Hisny Fajrussalam and Gia Nikawanti**



INTRODUCTION

Religious moderation is indeed the key to creating tolerance and harmony locally, nationally and globally (Nurjanah et al, 2022). Religious moderation can then be understood as views, attitudes and behavior that always take a middle position in religion, always act fairly and are not extreme (Nurdin, 2021)

Universitas Pendidikan Indonesia

THEORY AND METHODOLOGY

The approach in this research uses a literature study type of research. Literature studies can be carried out by collecting references from various studies that have been conducted previously, which are then collected to draw conclusions (Mardalis, 1999).

This research relies on a literature review to obtain research data and uses a descriptive qualitative approach because the data produced is in the form of text or descriptive. In this study, research was used by collecting various related literature, data processing was obtained by drawing conclusions from the results of the literature review.

...

* FINDING AND DISCUSSION

More Details

...



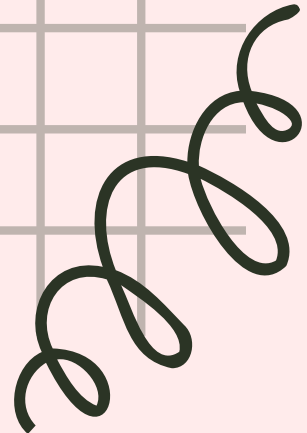
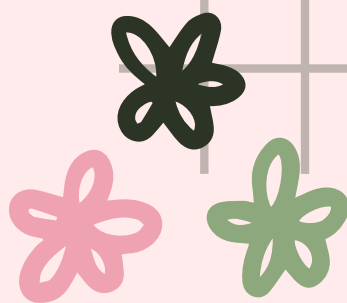
THE NATURE OF RELIGIOUS MODERATION IN EARLY CHILDHOOD INSTITUTIONS

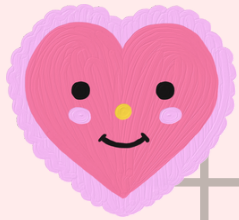
To avoid extreme views and careless attitudes towards religion, it is important for us to provide an understanding of religious tolerance from an early age, since children are still very young. This aims to prevent the emergence of extreme views and careless attitudes towards religion.



PRINCIPLES OF RELIGIOUS MODERATION IN EARLY CHILDHOOD INSTITUTIONS

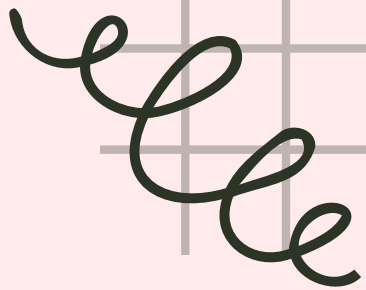
The principles that need to be realized in religious moderation include justice, balance, kindness, wisdom, istiqomah, and tolerance. Teachers need to get used to and set an example in applying these attitudes to children.

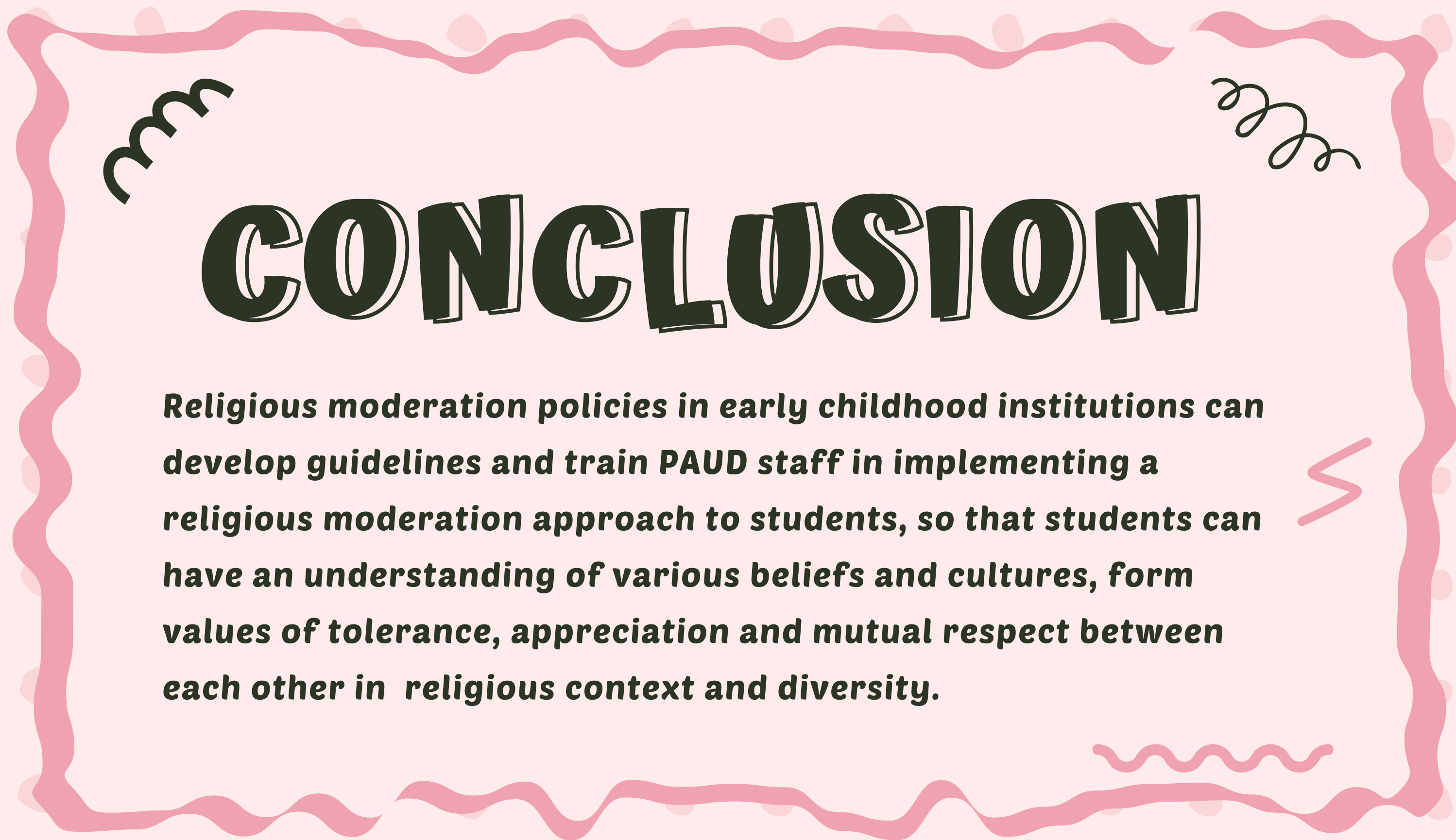




THE APPLICATION OF RELIGIOUS MODERATION IN PRE-SCHOOL INSTITUTIONS

Educational institutions, with the help of PAUD teachers, can play an important role in introducing and providing examples in implementing attitudes related to religious moderation to their children. Thus, the values of religious moderation can be instilled from an early age in early childhood education. Implementing religious moderation in the educational environment is an important priority for the good of the nation's future.





m

zzz

CONCLUSION

Religious moderation policies in early childhood institutions can develop guidelines and train PAUD staff in implementing a religious moderation approach to students, so that students can have an understanding of various beliefs and cultures, form values of tolerance, appreciation and mutual respect between each other in religious context and diversity.

