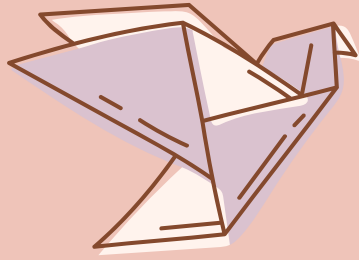


# Parental Strategies in Instilling Egalitarian Values in Early childhood



**Presented by Naura Safwah**



# research background

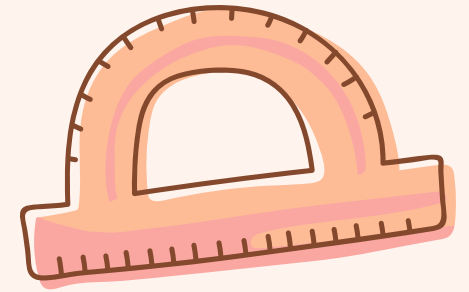
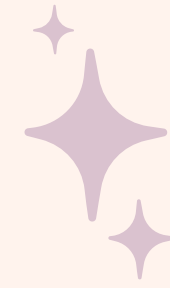


In the modern era, issues related to gender equality have increasingly become a primary concern of global society. Issues such as gender stereotypes, discrimination in schools, and the low representation of women in education are interrelated issues in the field of gender equality in education, especially in early childhood education. Efforts to introduce the diversity of gender roles in history and human achievements are also crucial in early childhood education, necessitating concrete steps that can be taken to address gender stereotypes, tackle gender discrimination, and provide valuable insights for parents and educators in supporting the development of children with strong egalitarian values from an early age.





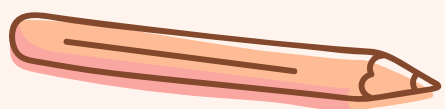
# Metodology

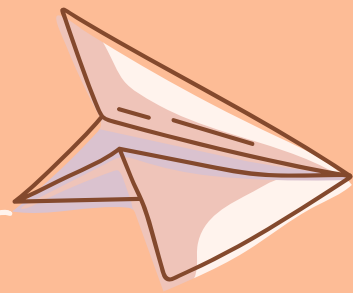


LITERATURE  
REVIEW OF BOOKS

JOURNAL  
ARTICLES

AND  
PROCEEDINGS





# Discussion result

The results of the discussion show that the importance of instilling egalitarian attitudes in young children through non-formal education as a crucial step in creating a fair and inclusive society. This approach involves a range of strategies, including creating a diverse learning environment, promoting open communication about equality, and setting positive examples of inclusive behavior. Collaboration between families, communities, and non-formal educational institutions is highlighted, along with the development of social skills like empathy and cooperation. Additionally, the integration of materials promoting equality into the curriculum is recommended. By implementing these strategies collectively, children can develop a profound understanding of the significance of equality and inclusion, contributing to the creation of a better and fairer society in the future.





# conclusion



In conclusion, instilling egalitarian values in young children is an invaluable investment in a more equitable and inclusive future. It fosters a generation sensitive to gender equality and human rights, contributing to global peace and justice. Therefore, it is crucial for all stakeholders, from families to educational institutions, to collaborate in imparting these values to children. The researchers recommend that parents should apply egalitarian values to young children, not just knowing them but implementing them in their lives. Egalitarian implementation should start early so that it becomes ingrained in an individual's character and personality. For future research, it is suggested to seek more references through international journals as there is still limited literature available in Indonesia.

